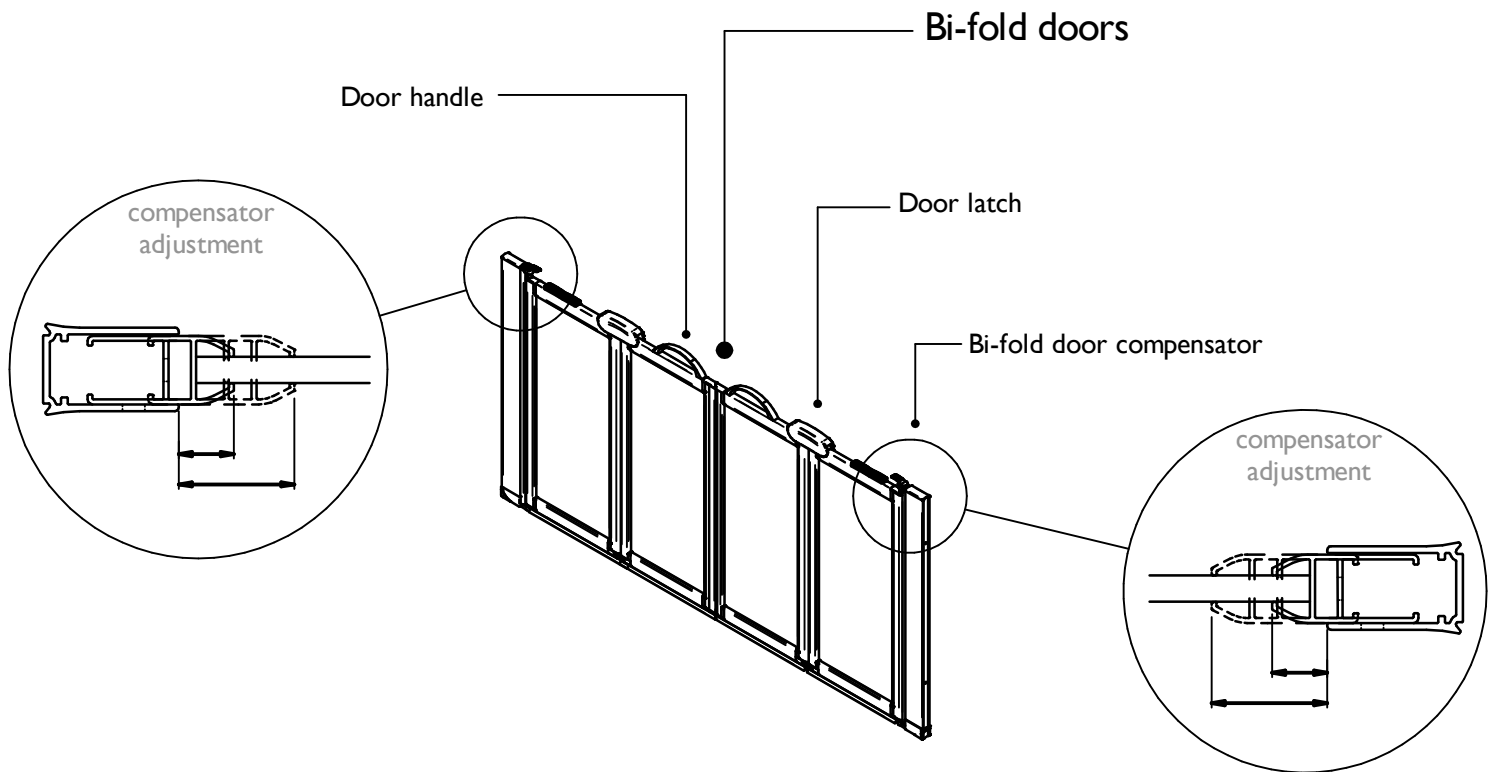


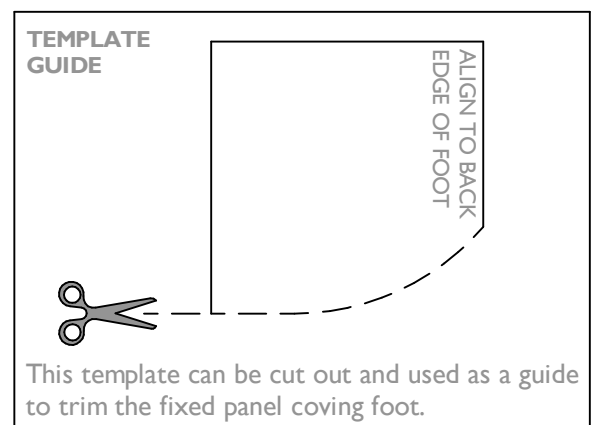
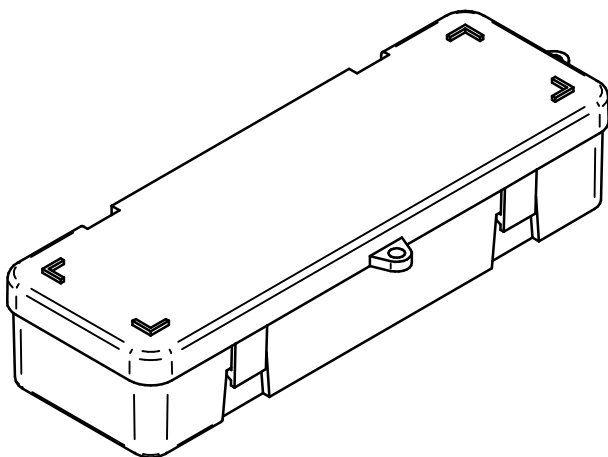
SAFETY

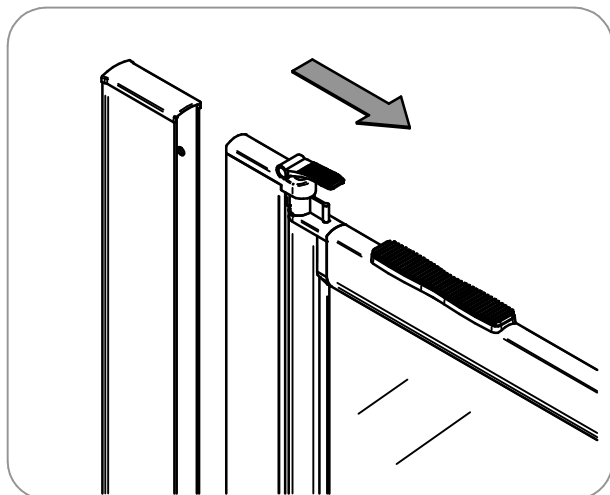
- Please read this installation instructions carefully before proceeding.
- Keep guide for future reference
- If you are unsure about any part of the installation, please contact our technical department on: 01460 258 682
- Incorrect installation will invalidate the guarantee
- Make sure there are no hidden pipes or cables in the floor or walls where you intend to drill.
- Wear safety goggles, shoes and appropriate clothing.

The door system explained

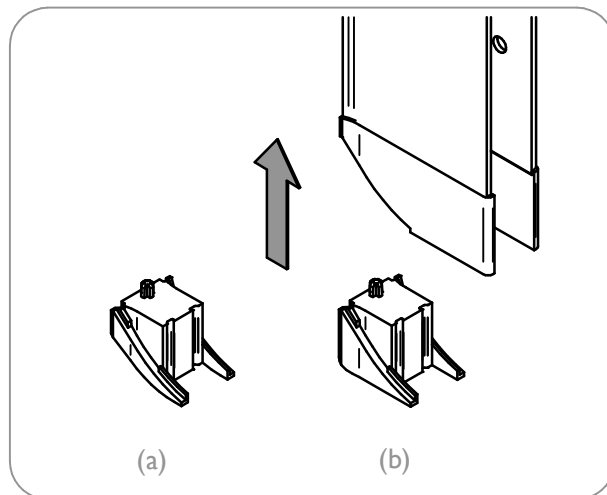


Fitting kit A2

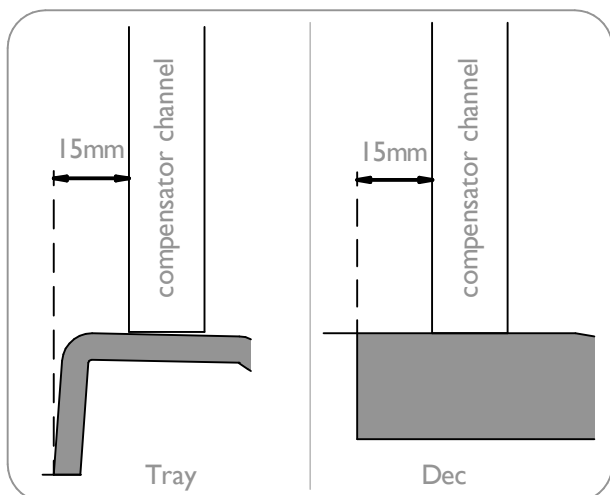




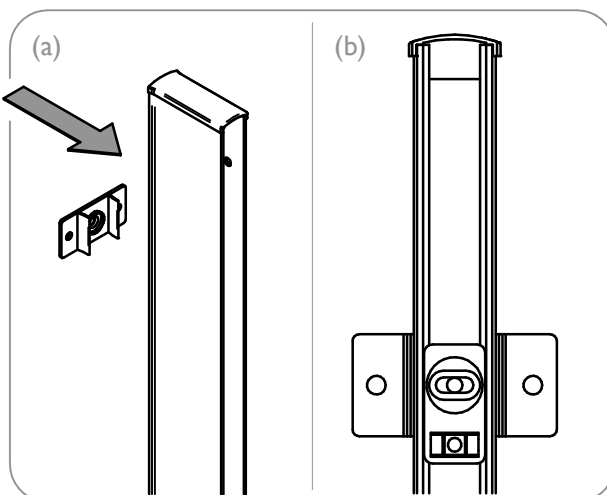
Remove door from compensator.



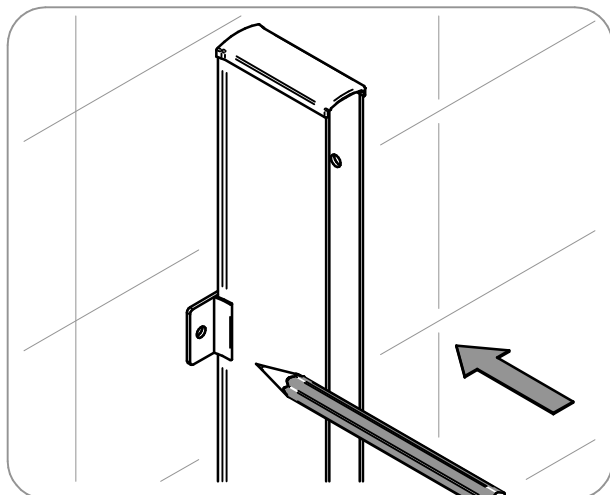
2 Select the correct coving foot for your installation:
(a) shower tray
(b) 30-35mm cove former - wetrooms



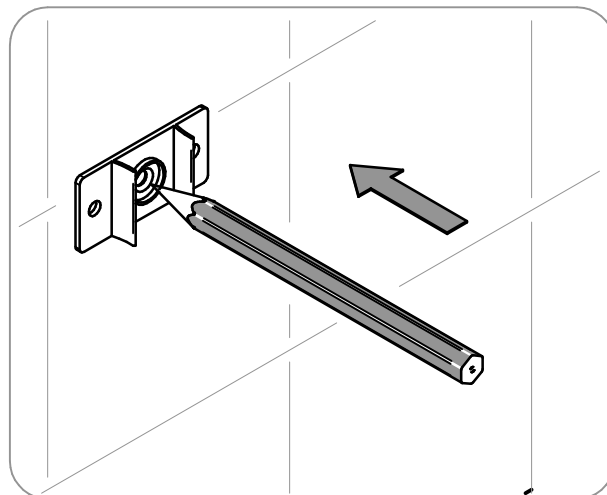
3 Position the compensator channel 15mm inboard from the edge of the tray/dec as shown.



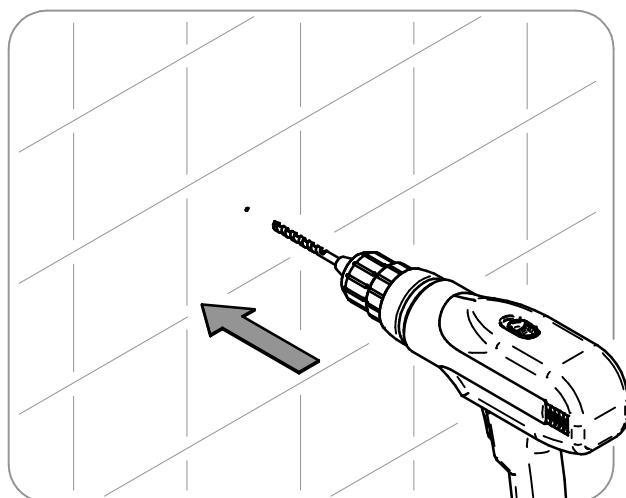
4 (a) Clip the two plastic locating plates in place.
(b) Align the spirit level bubble.



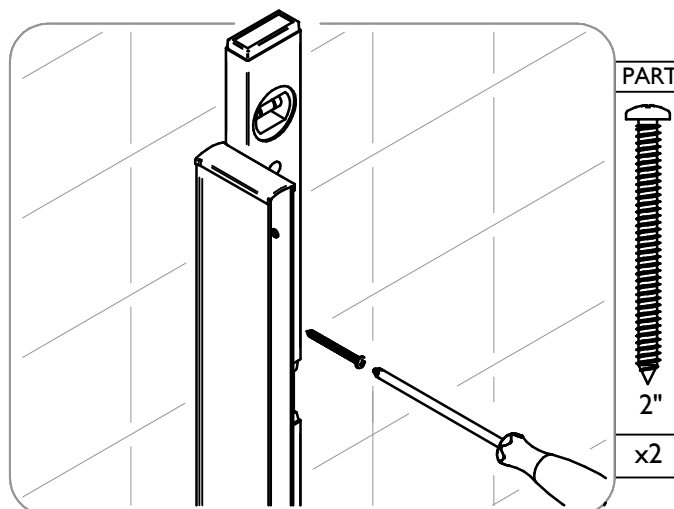
5 Mark the two alignment points, repeat for the lower fixing. **DO NOT DRILL MARKINGS**



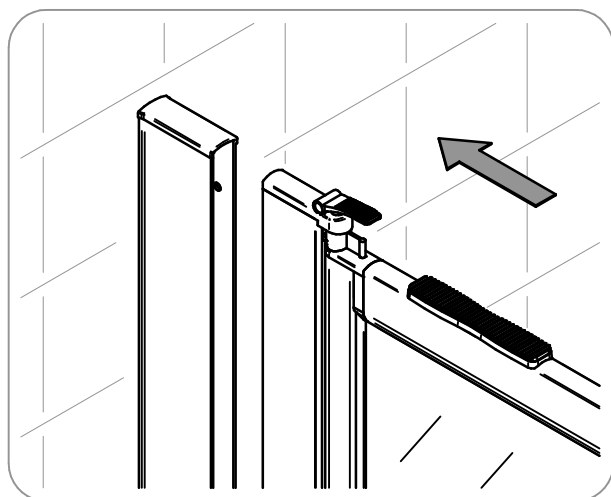
6 Unclip the marking plate and align with the previously marked points. Mark the centre hole for drilling. **DO NOT DRILL OUTER POINTS**



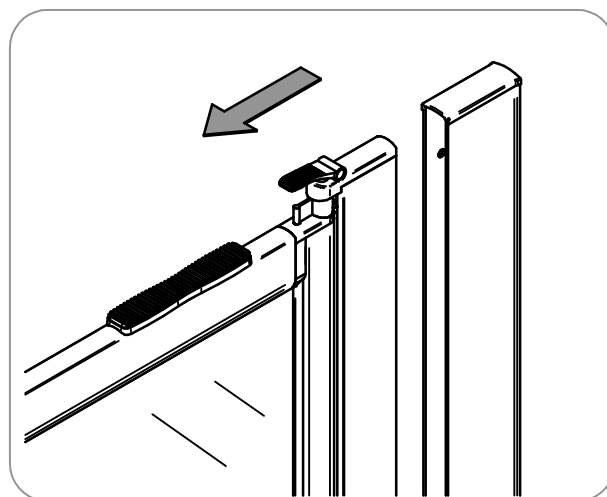
7 Using a suitable drill bit, drill the upper and lower marked centre points.



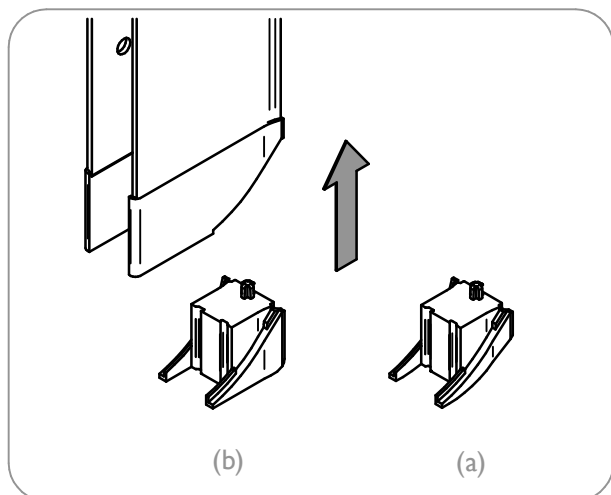
8 Using appropriate fixings, screw the wall channel into position, ensuring the channel remains vertical.
Note: Screw plugs may be required



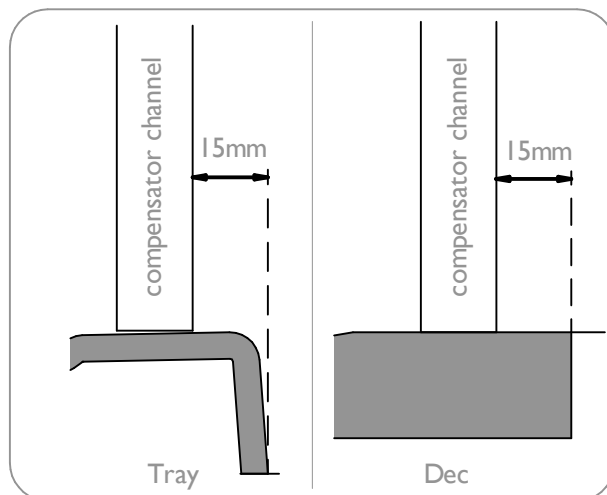
9 Insert the door into the wall compensator.



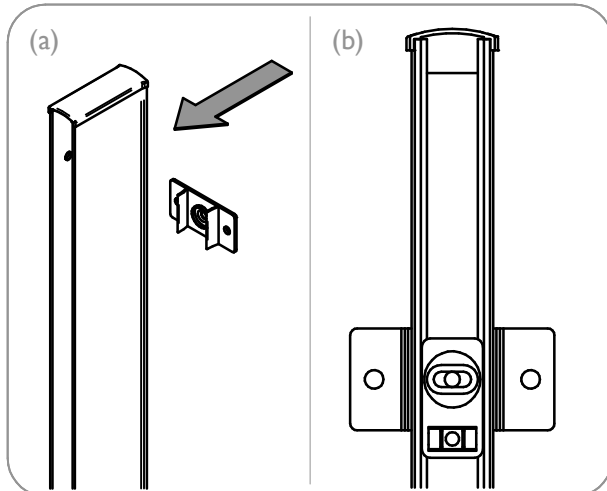
10 Opposing door: Remove door from compensator.



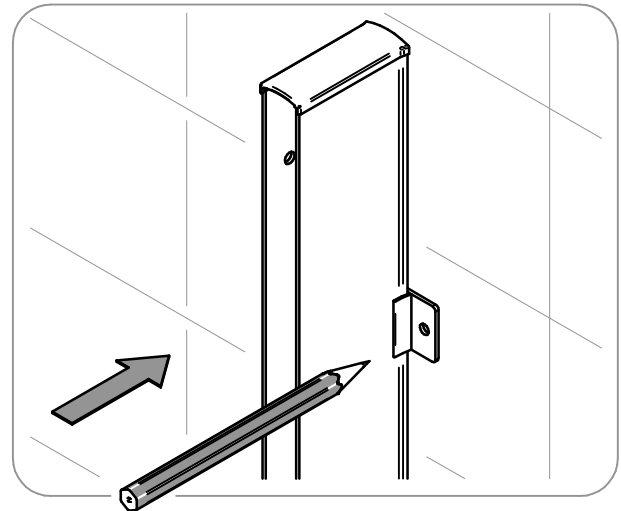
11 Select the correct coving foot for your installation:
(a) shower tray
(b) 30-35mm cove former - wetrooms



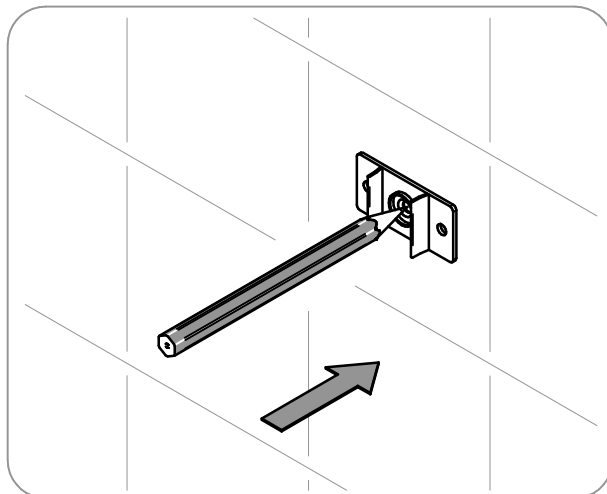
12 Position the compensator channel 15mm inboard from the edge of the tray/dec as shown.



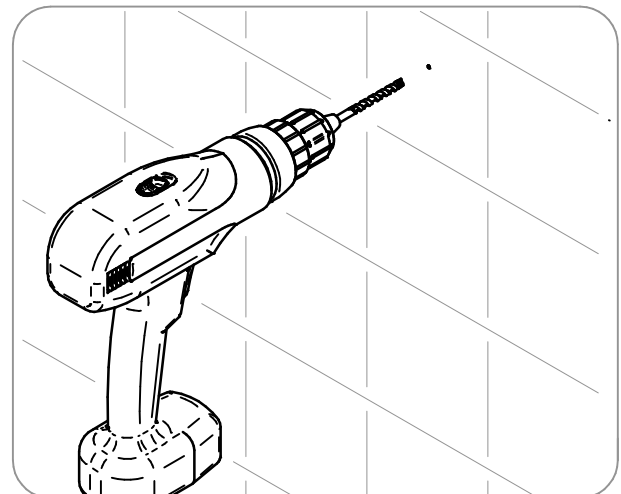
- 13** (a) Clip the two plastic locating plates in place.
(b) Align the spirit level bubble.



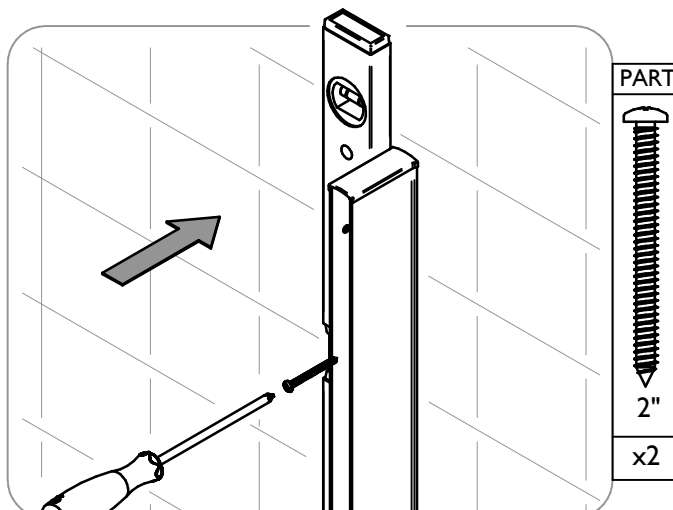
- 14** Mark the two alignment points, repeat for the lower fixing. **DO NOT DRILL MARKINGS**



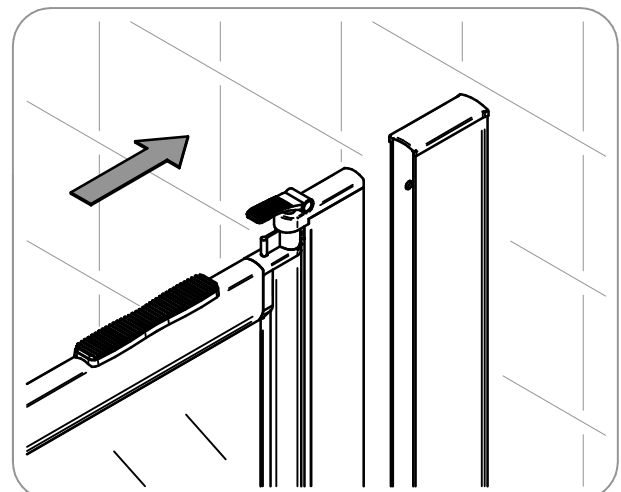
- 15** Unclip the marking plate and align with the previously marked points. Mark the centre hole for drilling. **DO NOT DRILL OUTER POINTS**



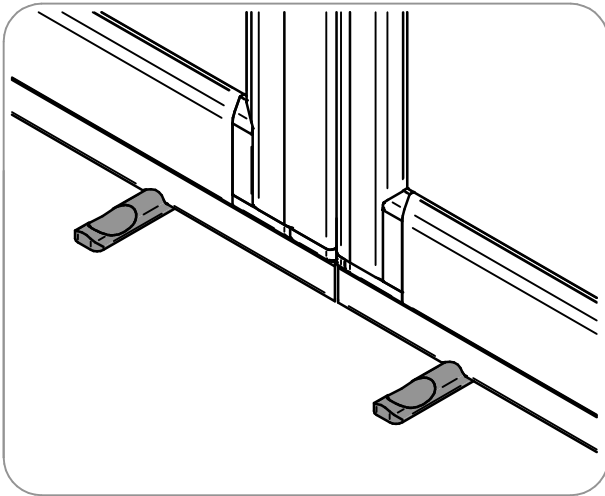
- 16** Using a suitable drill bit, drill the upper and lower marked centre points.



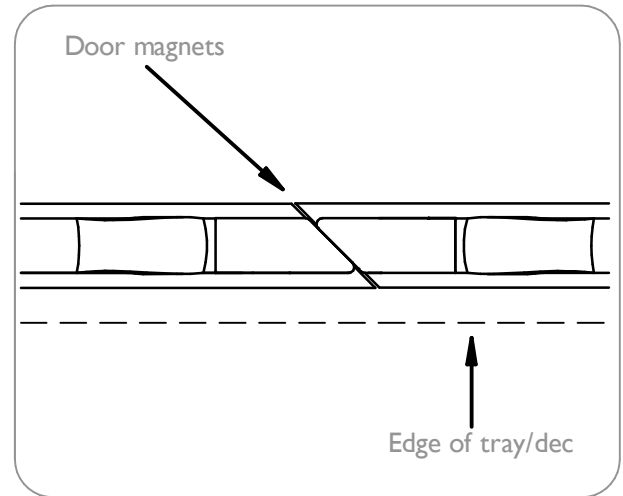
- 17** Using appropriate fixings, screw the wall channel into position, ensuring the channel remains vertical.
Note: Screw plugs may be required



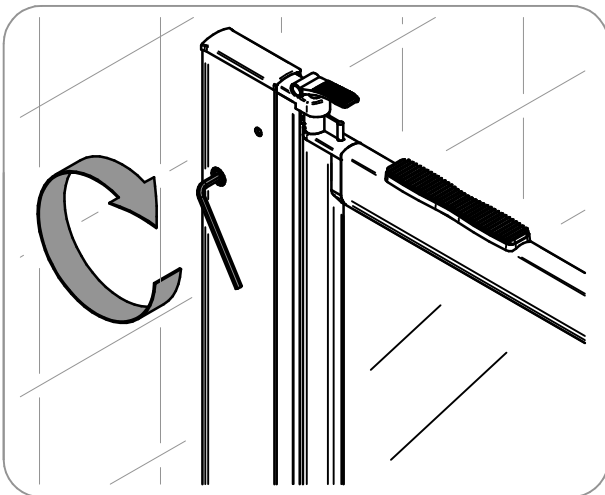
- 18** Insert the door into the wall compensator.



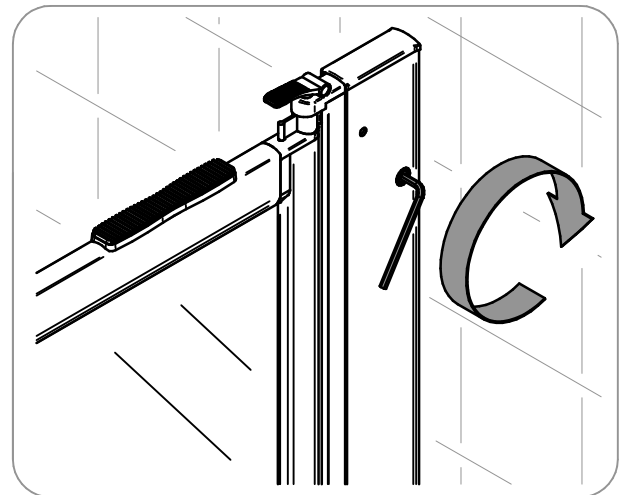
19 Allow doors to rest on door setters as shown. This ensures the doors are correctly height adjusted.



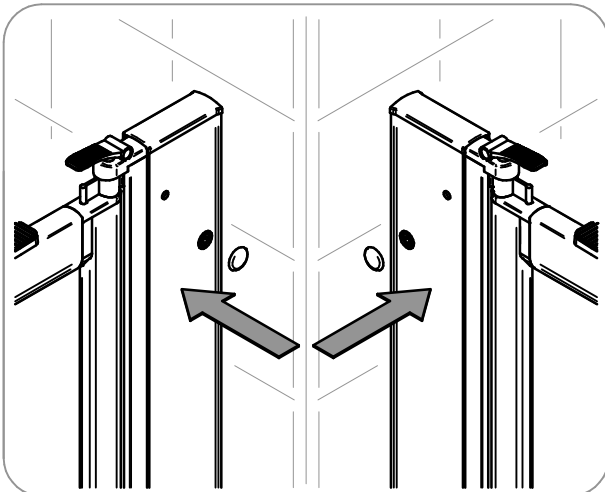
20 Align doors as shown. Magnets must meet and doors must be positioned on inside edge of tray/dec.



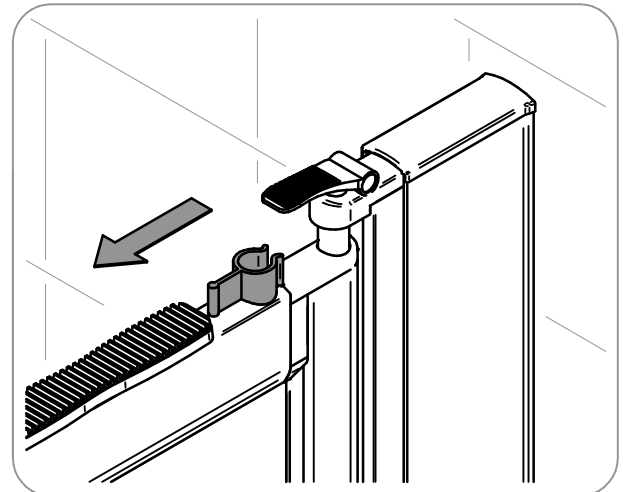
21 Once the doors are correctly aligned, tighten the upper and lower hex screws with the allen key provided.



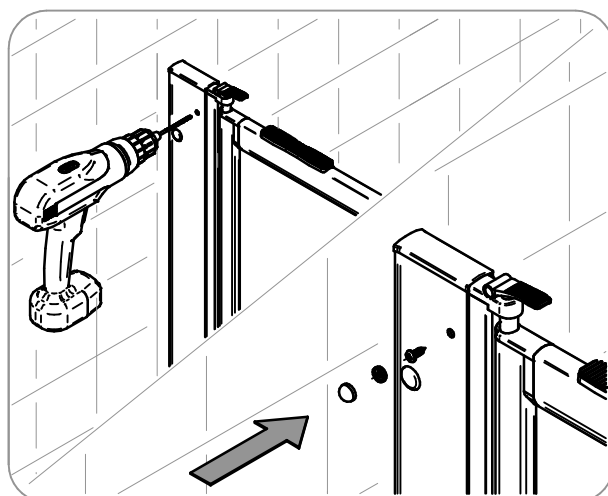
22 Repeat this for the opposite door.



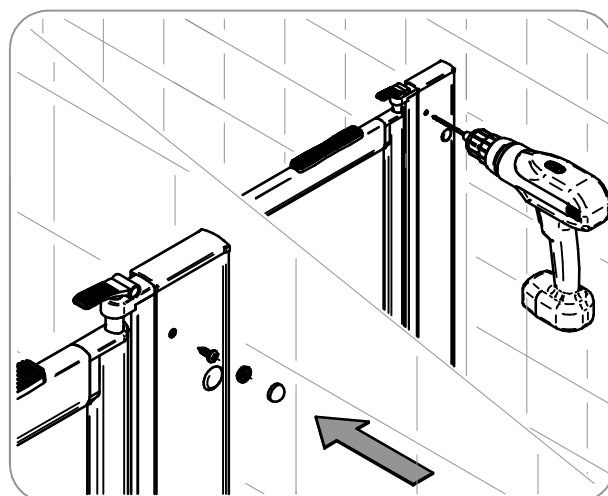
23 Push caps into place over hex screws (x4).



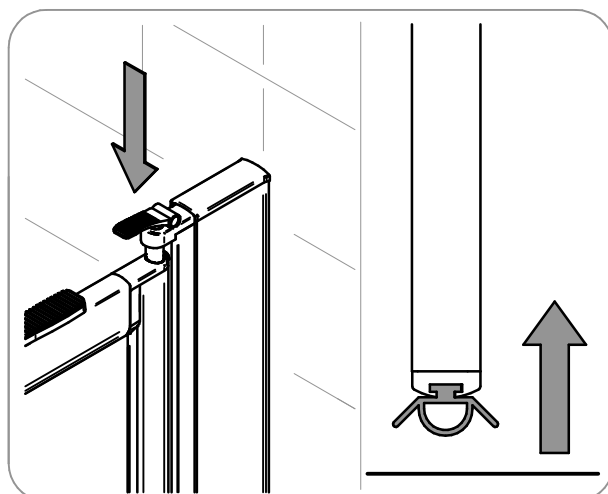
24 Remove both the door transport clips.



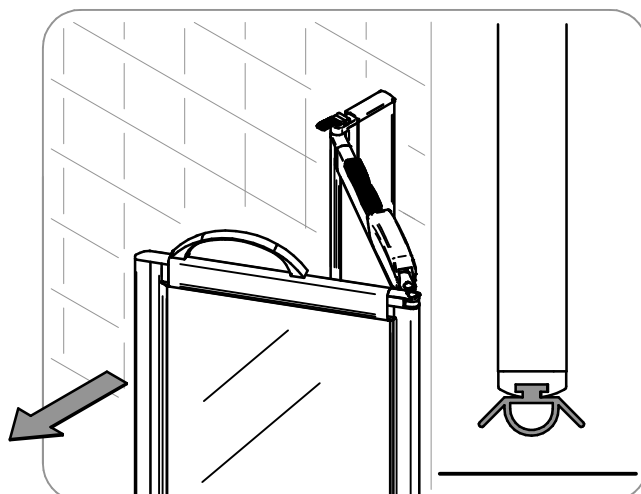
25 Drill (using a 3.5mm bit) and screw lockup holes (x2) in door compensator.



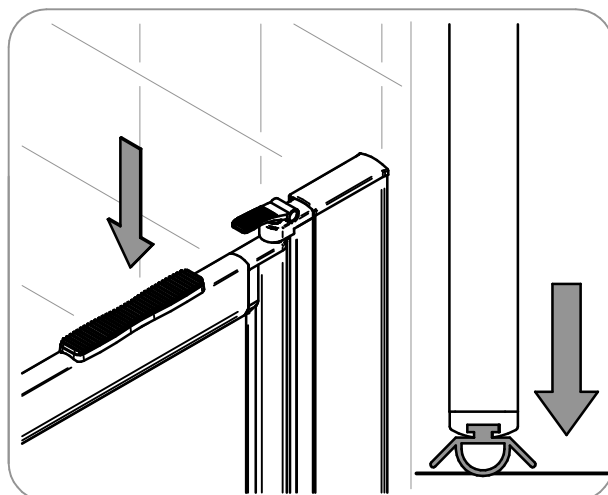
26 Repeat the last step for the opposing door.



27 Press the release lever to raise the door.

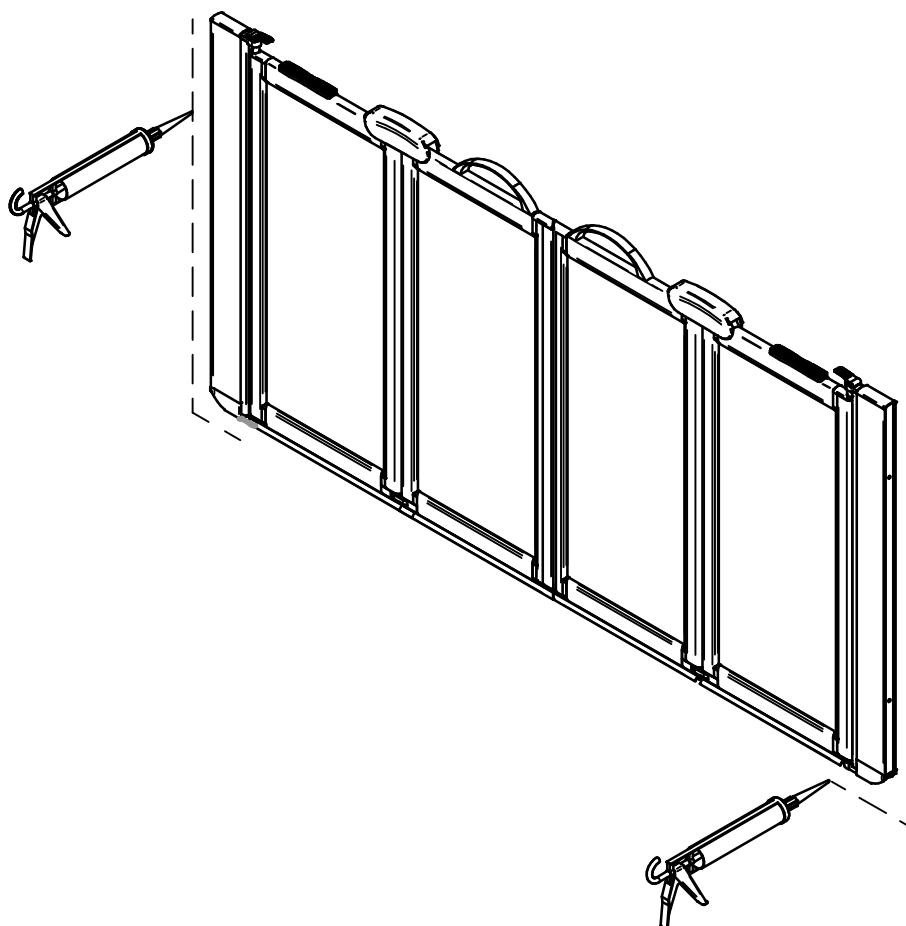


28 Test the door operation to ensure the doors meet and the floor seal does not drag.



29 Press down on the push pad to latch the door in the down position again.

Silicone around the door



Impey Showers
Conquest Business Park
Cad Road Ilton
Somerset
TA19 9EA

T: 01460 256080
F: 01460 259800

info@impeyshowers.com
www.impeyshowers.com

impey